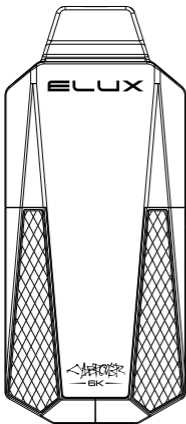


# ELUX



## User Manual

### PACKING LIST :

- 1 x ELUX CYBEROVER 6K Device
- 1 x ELUX CYBEROVER 6K E-liquid Container
- 1 x User Manual

### PARAMETERS :

- Size: 100.3x23.5x43.5mm
- Pod Capacity: 2.0 ml
- E-liquid Container Capacity: 10 ml
- Nicotine Strength: 20 mg/ml
- Puffs: Up to 6000
- Battery: 850mAh
- Charging Port: Type-C

### HOW TO USE

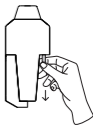
**1**

Remove the instruction sticker and read it carefully.



**2**

Pull the silicone bar to remove the cover.



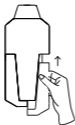
**3**

Press down and turn the children-proof cap counterclockwise to open the e-liquid container.



**Note:** Do not remove the rubber cover under the cap.

Slide the container through the groove on the device and push it all the way in.



Turn the device upside down for 10 seconds to fully fill the pod with e-liquid.



Draw to vape.



The Battery can be disassembled.



## LIGHT INDICATION

The light indicator will display differently to indicate the different working statuses.

### During vaping:

1. Three lights: battery level is high.
2. Two lights: battery level is medium.
3. One light: battery level is low. When there is one light flashing, please charge the device immediately.

### During charging:

All three lights flash sequentially from the first light when the battery level is low. The first light stays on, and the second and third lights flash sequentially when the battery level is medium.

The first and second lights stay on, and the third light flashes when the battery level is high.

All three lights stay on when the battery is fully charged.

After disconnecting it from power supply, all three lights flash three times and go off.

## STORAGE AND MAINTENANCE

### During vaping:

1. Keep the product away from direct sunlight and store it in a location with a temperature range of 0°C to 25°C.
2. Avoid refrigerating, freezing, or exposing the product to excessive heat.
3. Do not rinse or immerse the product for safe use.

### WARNING:

THIS PRODUCT IS NOT FOR USE BY CHILDREN AND NON-SMOKERS.

This product is not recommended for use by children and pregnant or lactating women.

Please read this manual carefully before you begin to use this product. Keep this manual as it contains important information which you may need again.

## POSSIBLE CONTRAINDICATIONS:

### Propylene glycol:

- May produce adverse effects in individuals being treated with disulfiram or metronidazole.
- Allergic reactions may occur in individuals with a history of atopy, childhood eczema, or rhinitis (hay fever).
- Lactic acidosis may occur when large quantities of propylene glycol are consumed by children, pregnant women or individuals with hepatic or renal failure.

## **Glycerol:**

- Chances of dehydration are increased in elderly and already dehydrated individuals
- Caution should be observed in individuals with diabetes, as metabolized glycerol may cause minor hyperglycemia and minor glycosuria

## **POSSIBLE ADVERSE EFFECTS**

First-time e-cigarette users may experience irritation of the mouth, a dry throat or cough. If the symptoms persist for more than 48 hours or become severe, visit a general practitioner and report the incident details as per the guidance provided under "Reporting adverse effects". Nicotine withdrawal effects may also occur if using an inadequate strength to satisfy your cravings. These may include irritability, aggression, feeling low, anxiety, restlessness, poor concentration, increased appetite, urges to smoke, disturbed sleep or the lowering of heart rate.

## **REPORTING ADVERSE EFFECTS**

If you experience any side effects as a result of using this product, please notify the local authority in relation to adverse effects relating to products purchased. You may also register a safety concern with the relevant competent authority within your country.

## **ADDICTIVENESS**

This product contains nicotine which is a highly addictive substance, and, therefore, is not recommended for use by non-smokers. No other ingredient in this product, aside from nicotine, is known to be addictive.

## **TOXICITY**

This product contains nicotine which may produce toxic effects if consumed orally, especially in infants or children, DO NOT drink this product. If swallowed, visit your general practitioner with this leaflet immediately. If spilled onto skin, rinse with cold water immediately and continue for 10-15 minutes.



[www.eluxtech.com](http://www.eluxtech.com)



# **ELUX**

### **MANUFACTURER:**

Dongguan Chengkai Electronic Technology Co., Ltd

### **ADDRESS:**

Room 102, Building 3, No.5 Yongshun Street, North Shore, Huangjiang Town, Dongguan City, Guangdong Province

E-mail: [support@eluxtech.com](mailto:support@eluxtech.com)

